

The Center Players Community Theatre Presents

BASED ON THE SCREENPLAY BY
JONATHAN LYNN

WRITTEN BY
SANDY RUSTIN

ADDITIONAL MATERIAL BY
HUNTER FOSTER & ERIC PRICE

ORIGINAL MUSIC BY
MICHAEL HOLLAND

Clue

ON STAGE

September 21 - 24, 2023

DIRECTED BY
KEN HACKMAN

BASED ON THE **PARAMOUNT PICTURES** MOTION PICTURE

BASED ON THE **HASBRO** BOARD GAME **CLUE**

Madison
the city

WWW.THECENTERPLAYERS.ORG



MADISON SQUARE CENTER FOR THE ARTS / 2103 MAIN ST., MADISON

BY SPECIAL ARRANGEMENT WITH THE ARACA GROUP, WORK LIGHT PRODUCTIONS, AND MICHAEL BARR/LIVELY MCCABE ENTERTAINMENT



A HANDSHAKE

As a firm built on relationships, our handshake matters. It means a warm greeting, the privilege of doing business together and knowing you can count on us.

Our performance builds relationships with our clients, many of whom have become old friends. It's why shaking hands with us means just a little bit more.

140 Township Avenue
Suite 202
Ridgeland, MS 39157
(601) 605-5675

Stephens

 @Stephens_Inc • Stephens.com

STEPHENS INC. • MEMBER NYSE, SIPC

CLUE ON STAGE

BASED ON THE SCREENPLAY BY
JONATHAN LYNN

WRITTEN BY
SANDY RUSTIN

ADDITIONAL MATERIAL BY
HUNTER FOSTER & ERIC PRICE

BASED ON
THE PARAMOUNT MOTION PICTURE

BASED ON
THE HASBRO BOARD GAME CLUE

ORIGINAL MUSIC BY
MICHAEL HOLLAND

By special arrangement with The Araca Group, Work Light Productions,
and Michael Barra/Lively McCabe Entertainment

CLUE ON STAGE

Is presented through special arrangement with Broadway Licensing, LLC
servicing the Dramatists Play Service collection.

www.dramatists.com

NOTE TO AUDIENCE



The videotaping or audio and/or visual recording of this production is a violation of United States Copyright Law and is an actionable federal offense.



Please respect the actors on stage and your neighbor by turning off all cell phones, pagers, and chiming watches.



Please be advised the use of tobacco is strictly prohibited at the Madison Square Center for the Arts. The characters are using props on stage.



Please be advised that theatrical special effects such as gunshot sound effects are used in this production.

Special Thank You

City of Madison, Mayor Mary Hawkins Butler, Amy Cummins, Lucy Weber, JP Martin,
The Resource Center at Trace Ridge Church, Terri Cribb

Meet The Director



Ken Hackman - Director

Ken is excited to once again direct a production on the Center Players' Stage. A veteran of over 150 shows as a performer and director, past directorial favorites include *Sweeney Todd*, *Second Lady* - a show for which he won Best Director and Best Production honors from the Mississippi Theatre Association, *Arsenic and Old Lace*, *The Robber Bridegroom*, *The Odd Couple (female version)*, and *You're a Good Man Charlie Brown*. Some of Ken's favorite roles as an actor have been the title roles in *The Foreigner*, *Dracula*, and *Lend Me a Tenor*, as well as *The Red Peppers*, for which he received MTA's Best Actor Award. Other favorites have included Joe in *The Shadow Box*, Snoopy in *You're a Good Man Charlie Brown*, Hawkeye in *M*A*S*H**, Johnny Cantone in *The 1940s Radio Hour*.

Ken has been active in community theatre in the Metro area for over 30 years, and has served as president for Center Players, Playhouse North, and The Clinton Community Theatre. He is married to his gorgeous wife of 40 years, Ruth Broome-Hackman, whom he met on stage at Mississippi State and has two beautiful daughters - Mandy, 34, a very talented actress in her own right, and Allyn, 24, who sparkles each time she takes the stage.

The Cast

(in order of appearance)

Yvette	Phoebe Whitley
Wadsworth	Vinny Jordan
The Cook / Ensemble Woman	Courtney Haindel
Colonel Mustard	Wayne Thomas
Mrs. White	Connie Black
Mrs. Peacock	Mandy Hackman
Mr. Green	Wyatt Wilson
Professor Plum	Samuel Smylie
Miss Scarlet	Roxie Hood
Mr. Boddy	Bradley Davis
Chief of Police / Ensemble Man	Nathan Dunaway
Cop / Ensemble Man	Steven Carter
Singing Telegram Girl	Sims Jones

The Crew

Director	Ken Hackman
Assistant Director	Nathan Dunaway
Stage Managers	Allyn Hackman, Courtney Haindel
Technical Director	Callie Jackson
Technical Assistant	Emma Schirmer
Lights	Campbell Haindel
Lighting Designer	Katy Mayhan
Set Construction	Ben Haindel, Ken Hackman, Joseph Whitley, Cast
Set Crew	Deanna Backel, Lilly Dunaway, Ciema Jamileh, Cast
Graphic and Media Design	James Covington
Headshot Photographer	Ashlee Britt

Meet The Cast



Connie Black - Mrs. White

Connie is a retired music teacher who relocated to Madison from Greenwood last year. Her first role with Center Players was Jack's Mother in *Into the Woods*. This is her second role at Center Players, and she is having a fabulous time as Mrs. Black playing Mrs. White! Such a fun cast and crew!! And, so thankful for this opportunity!



Steven Carter - Cop / Ensemble Man

Steven Carter is excited to make his acting debut in the stage version of his favorite movie, *Clue!* Steven has been involved in music since he could talk but missed out on his recording debut with his two sisters because he was too scared to go into the booth at the ripe old age of 3. He is a self-taught musician, playing for over 20 years, and currently serves as pianist at Greater Works Baptist Church. He is newly married and spends all the time he can with his wonderful wife, Jessica, and their two not-at-all-crazy dogs, Pepper and Dexter.



Bradley Davis - Mr. Boddy

Bradley is an International Man of Mystery. Bradley participated in show choir and musical theater at Madison Middle School and Madison Central High School. He then studied Vocal Performance at Tougaloo College and the University of Southern Mississippi. With his recent signing to Nettwerk Music Group, Bradley is now a full-time recording artist. He is also the Founder of Davis Dance Demonstrations, where he does professional choreography for musicals and show choirs all over the state of Mississippi. In addition, he is Dance Instructor/ Choreographer for Madison Summer Arts Camp. Bradley was most recently seen as the Wolf in *Into the Woods* and looks forward to making his directorial debut with *The Best Christmas Pageant Ever* for Center Players.



Nathan Dunaway - Assistant Director / Chief of Police / Ensemble Man

Nathan is employed by the US Postal Service as the Manager of Address Management Systems for the AL/MS District. While this is his Center Players debut, Nathan has previously performed in *1776*, *Hello, Dolly!*, *The Music Man*, and as Jonathan Brewster in *Arsenic and Old Lace*. He has also worked in various capacities on *Damn Yankees* and *Guys and Dolls*. Nathan can also be heard as reporter Tim Reeves in the podcast, "Deep Space". Special thanks to Brenda, Lilly, Emily, and Devon for their support during this production.

Meet The Cast



Mandy Hackman - Mrs. Peacock

Mandy has been active with the Center Players since their first production in 2001, and has worked in various onstage and backstage roles in the years since. She has directed several CP shows, including *Into the Woods*, *Newsies*, and *The Best Christmas Pageant Ever*. Mandy was last seen on stage in 2017 as Princess Winnifred in *Once Upon a Mattress*, one of her favorite roles to date. Some of her other favorite roles include Henrietta in *All Shook Up*, Katisha in *The Mikado*, and Vera in *Dog Act*. Mandy received bachelor's degrees in English and Theatre and a master's in education from Mississippi State University. She taught English, German, and Film Production in the Jag zone for nine years, and now works for the MS Dept of Education.



Courtney Haindel - Stage Manager / The Cook / Ensemble Woman

Courtney is a former educator who now works in marketing for an educational software company. She and her family moved to Madison a year ago, and she is returning to the stage after a lonnnnnnnnnng hiatus (like thirty years long!) She is thrilled to be on stage with the Center Players crew and is especially excited to "theater geek out" with her daughter Campbell, who is working the lights.



Roxie Hood - Miss Scarlet

Roxie is a board member of the Mississippi Theatre Association and has been seen locally in shows with Fondren Theatre Workshop, Actor's Playhouse, New Stage, New Stage Unframed, and Center Players over the last 14 years. She is a high school teacher by trade, and a serial crafter at home. She resides in Madison with her husband, two children, and two dogs.



Sims Jones - Singing Telegram Girl

Sims Jones, a Madison-Ridgeland Academy Senior, is the daughter of Adam and Allison Jones. She currently serves as Madison County's Distinguished Young Women, MRA Student Body Vice President, MRA Varsity Dance Team Captain, and the Director of Service for the Madison Junior Civitan Club. She is passionate about performing arts and is so excited for her debut Center Players production! She hopes you enjoy the show!

Meet The Cast



Vinny Jordan - Wadsworth

Vinny is a software and media engineer for a local VR Development company called Lobaki. He grew up regularly in small theater productions and continues to use his skills in animation and voiceover work. His performance as Wadsworth marks his first time back on stage in over 10 years, and his first time working with the Madison Center Players.



Samuel Smylie - Professor Plum

Samuel graduated from Belhaven with a bachelor's in Psychology and a master's in Teaching. He currently teaches 7th and 8th grade Math at his alma mater MRA, heads the Middle School Student Council, and is enjoying his 9th year in the Elementary after school program. Favorite past roles include Lumiere, Scar, Ali Hakim, and Hugo; at MRA he has assistant directed *Cinderella*, *Joseph...Dreamcoat*, *Anastasia*, *Seussical*, and *Freaky Friday*. When not at school, he can be found working summer camp at MRA or at Summer Arts Camp, where he has enjoyed being Head Counselor the last five years. Samuel feels absolutely blessed to be able to work with so many different age groups of children each day, both on and off MRA's campus.



Wayne Thomas - Colonel Mustard

Wayne left the stage in the early 1970s and stayed away for thirty years. He attended an audition just over twenty years ago in this very theatre based on an ad he saw. He had no plan or idea that the audition would lead to being cast in thirty shows in various theaters as well as close to a hundred performances in dinner theatre with the group known as The Detectives. While he has said several times, "This is my last," he's learned to add "maybe." "But if I finish where I started, I'm still thankful for every opportunity."



Phoebe Whitley - Yvette

Phoebe Love Whitley is a freelance artist, seamstress, knitter, home cook, doll collector, pianist, and general jack-of-all-trades. She began acting in various community theatre productions in her hometown of Decatur, Alabama when she was five years old. Her most recent role was Beth in a production of *Little Women* in 2011. 12 years later and she is excited to be back on stage! This is her first performance in Mississippi and her first performance with The Center Players.

Meet The Cast



Wyatt Wilson - Mr. Green

Wyatt is a graduate of The University of Mississippi with a BA in Theatre Arts. Wyatt was most recently onstage in *Little Shop of Horrors* and in *Into the Woods* at Ole Miss. Wyatt has been performing in the Madison area for over a decade making his debut in *Nifty Fifties* at MMS and most recently being seen arresting Crutchie as an officer in *Newsies* at Center Players. Wyatt is the purple group counselor at Madison Summer Arts Camp where his favorite moments include hanging set pieces from the ceiling. He looks forward to assistant directing *The Best Christmas Pageant Ever* for the Center Players in December.

Meet The Crew

James Covington - Graphic and Media Design

James is a sophomore at Liberty University in Lynchburg, VA, pursuing a BFA in Musical Theatre with minors in Vocal Performance and Dance. James is a professional actor with credits from the Alluvion Stage Company in Lynchburg VA, and Dollywood Theme Park in Pigeon Forge, TN. He is currently in Liberty's production of *Cinderella* by R&H.

Allyn Hackman - Stage Manager

Allyn is thrilled to be stepping back onto the Center Players (back)stage. After graduating with a Bachelor's Degree in Theatre from Mississippi State, she is happy to be back with her Center Players family as a killer (haha) stage manager.

Campbell Haindel - Lights

Campbell is an 8th grader at Madison-Ridgeland Academy, where she is on Student Council and active in MRA theater, as well as in Summer Arts Camp productions. She is a self-proclaimed indoorsy book nerd and die-hard theatre kid. She is excited to be behind the lights for this production and wants to thank Katy Mayhan for teaching her all the ropes!

Callie Jackson - Technical Director

Callie is daughter of Gil and Edie Jackson. This is her fifth year as Sound Technician/Playback Specialist at Center Players. Her most memorable moment at Center Players consists of breaking her ankle as the final performance of *Into the Woods* was about to start.

Katy Mayhan - Lighting Designer

A senior at Madison Central, Katy is a member of Reveille Show Choir, 30+ Club, Mayor's Youth Council, Madison Civinettes, Vice President for Mississippi Thespian Troupe 5251, and formerly of Renown and Radiance Show Choirs. She is also a Mississippi Thespian State Officer. Katy was most recently seen on the stage as Milky White in *Into the Woods*.

Emma Schirmer- Technical Assistant

Emma is a senior at Germantown High School. She likes playing golf, reading, and hanging out with friends. She has been active with Center Players for many years on stage and in the tech booth.

New, consignment, toys, and gifts. We've got it all!

Leap Frog
CHILDREN'S consignment & MORE

leapfrogms.com | 601.898.0727
104 Village Blvd Madison, MS 39110

WANTED
(DESPERATELY!)

HUSBAND #6

CONDITION:
DEAD OR ALIVE...

It could be YOU!
Love, Mrs. White



Sugar Daze
DESERT SHOP

**STOP IN FOR A SWEET TREAT
OR TO ORDER A CUSTOM CAKE!**

102 Dees Dr
Suite D
Madison, MS

TUE - FRI
9am - 6pm

SAT
9am - 4pm

601-605-5008

- HOTEL GROUP PICK-UP OF TUXEDOS •
- INVENTORY IN-STOCK •
- SAME DAY & IN-HOUSE ALTERATIONS •
- LOCALLY OWNED •
- ATTENTION TO DETAIL •

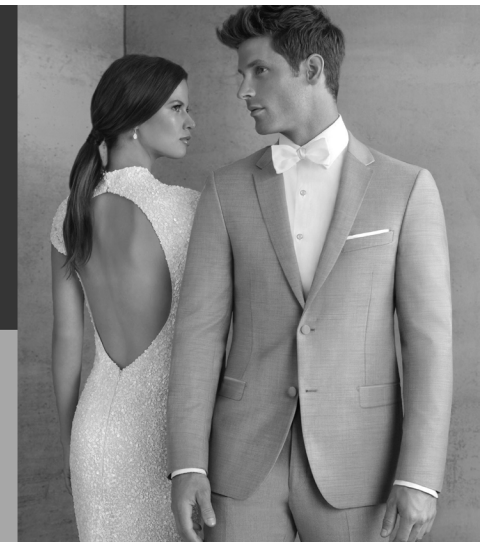
One Less Thing to Worry About

TUXES TOO
MEN'S FORMALWEAR SPECIALIST

MICHAEL KORS | IKE BEHAR | KENNETH COLE

4465 I-55 North | Banner Hall | Jackson, Miss.

601-981-0106





**Here is to a fantastic performance,
knowing that all of your work and
perseverance will be acknowledged
and loved.**

From our Natchez Trace Family to yours!

All the world's a stage and all the men and women merely players; They have their exits
and their entrances, and one man in his time plays many parts.
William Shakespeare

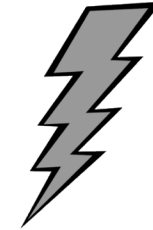


kathy sue wells

- PHOTOGRAPHY -

601.953.3263

Senior Packages
Business Headshots
Engagements and More!



On August 13, 2016, we lost our grandson, Jack Dunaway. Since his passing, we have heard numerous stories of acts of kindness that Jack had done for others. In his honor, we have started "Do a JackAttack", a non-profit movement. To keep his memory alive, please do a random act of kindness for someone else and help spread the word. For more information or to send a donation, please write: 191 St. Augustine Drive Madison, MS 39110-9639 or visit our Facebook page.

Matthew 25:40 – "The King will reply 'Truly I tell you, whatever you did for one of the least of these brothers and sisters of mine, you did for me.'"



SPACIOUS BOARDING SUITES
EXCLUSIVELY FOR FELINES

608 HIGHWAY 51 N
RIDGELAND, MS

601-790-CATS



Madison-Ridgeland Academy
Middle School



Break a Leg

**PROFESSOR
PLUM!**



BUYING OR SELLING A HOME?

LET'S WORK TOGETHER!

Buying or selling a home can be a stressful process if you don't have the right real estate agents. With over 10 years of experience, you can rely on us to get you the best possible results.



LISA DAVIS, BROKER
JESSICA MCLAURIN, AGENT
CHYLA MILLER, AGENT
(601) 214-0764

**CONGRATULATIONS
BRADLEY DAVIS**



Clue

**Congratulations to the
entire cast of Clue!**

**Especially our
Chef, Courtney Haindel
Light Board Operator, Campbell
Haindel & Set Constructor, Ben
Haindel**

Barry and Liz Haindel, Life Resources, Inc.
liferesources.net

Teach your daughter to KILL!

(...it's a volleyball thing)

"A Kill (K) is awarded to
a volleyball player any
time an attack is
unreturnable by the
opposition"





MRA IS PROUD OF

Cast:

**Connie Black,
Sims Jones,
Samuel Smylie,
Courtney Haindel**

**Set Construction:
Ben Haindel**

**Lights:
Campbell Haindel**